



C H L O R A K A  
SEAVIEW RESORT

# Introduction

Chloraka

The project is close to the city center, with complete amenities, and is within a 10-minute drive from schools, hospitals, supermarkets and shopping malls.

Located in a wealthy area with a strong traditional cultural atmosphere, the surrounding residents have a high level of population, and the humanities and natural environment are of high quality.







Town hall : 5 mins



beach: 1 min



Private school : 1 min



Public school : 3 mins



supermarket: 1 min



Private hospital : 4 mins



Public hospital : 10 mins



airport : 20 mins

Chloraka seaview resort

Town hall

帕福斯

Πάφος

Tombs of the Kings  
Αρχαιολογικός Χώρος  
Τάφων των Βασιλέων

Nea Paphos

Paphos Aphrodite  
Waterpark  
Υδροπάρκο Αφροδίτη  
水上乐园

Yeroskipou  
Γεροσκήπου

阿海利亚  
Αχέλεια

Timi  
Τιμή

Mandria  
Μανδριά

Anarita  
Αναρίτα

Foinikas  
Φοίνικας  
Asprokremmos Reservoir  
Φράγμα Ασπρόκρεμμου

Nikokleia  
Νικόκλεια

Kouklia  
Κούκλια

Souskiou  
Σουσκιού

Oreites Forest  
Δάσος  
Ορειτών

Oreites Wind Farm

Archimandrita  
Αρχιμανδρίτα

Maronas  
Μάρωνας

Agios Georgios  
Άγιος  
Γεώργιος

Mamonia  
Μαμώνια

Stavrokonnou  
Σταυροκόννου

Nata  
Νατά

Episkopi  
Επισκοπή

Marathounta  
Μαραθούντα

Konia  
Κονιά

Armou  
Άρμου

Mesa Chorio  
Μέσα Χωριό

Mesogi  
Μεσόγη

Tremithousa  
Τρεμιθούσα

Lempa  
Λέμπα

Kissonerga  
Κισσόνεργα

Tala  
Τάλα

Tsada  
Τσάδα

Kallepia  
Καλλέπεια

Eledio  
Ελεδιό

Amargeti  
Αμαργέτη

Kelokedara  
Κελοκέδαρα

Trach  
Τραχ

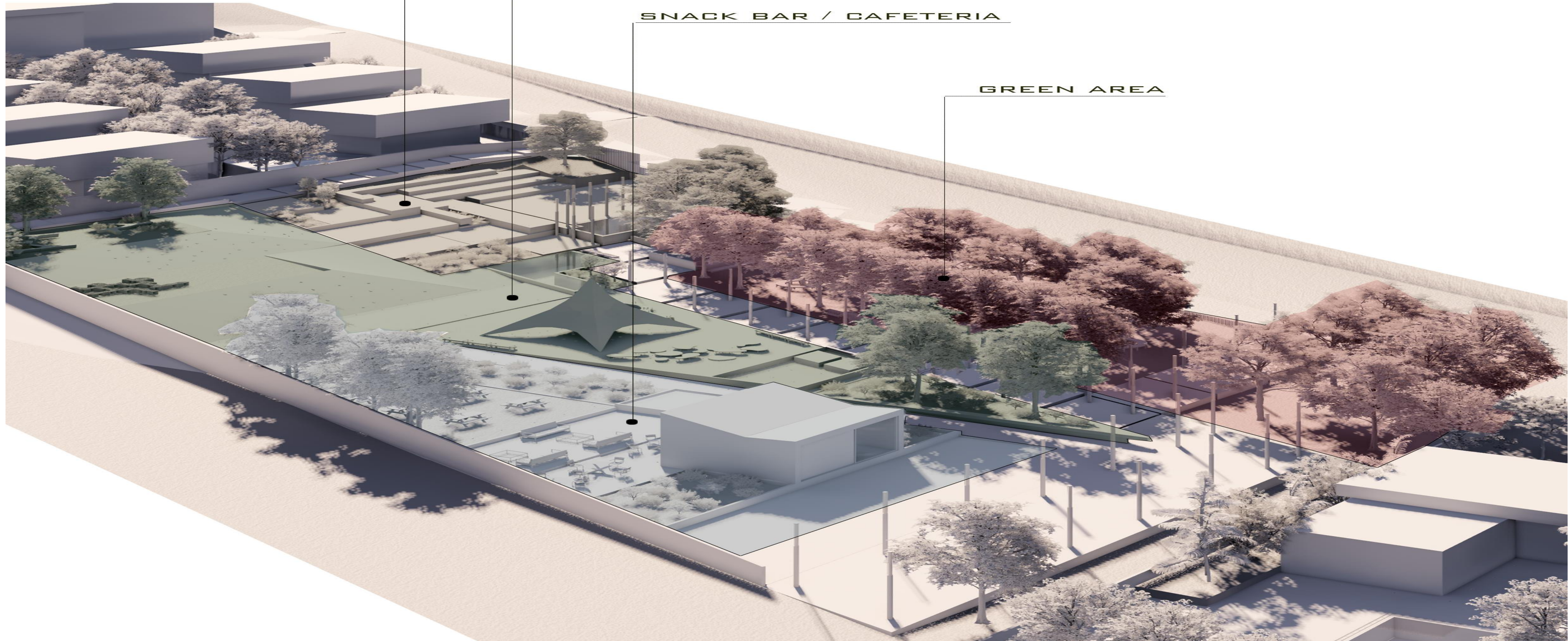


AMPHITHEATRE

PLAYGROUND

SNACK BAR / CAFETERIA

GREEN AREA





An architectural rendering of a terraced hillside development. The hillside is divided into three distinct zones, each with a different background color. Zone 3, at the top, is light yellow and features a large, modern building with a flat roof and a series of terraces. Zone 2, in the middle, is light pink and shows a series of terraced steps and small, rectangular buildings. Zone 1, at the bottom, is light blue and contains a large, open area with many trees and a few small buildings. The overall design is modern and minimalist, with a focus on terracing and greenery.

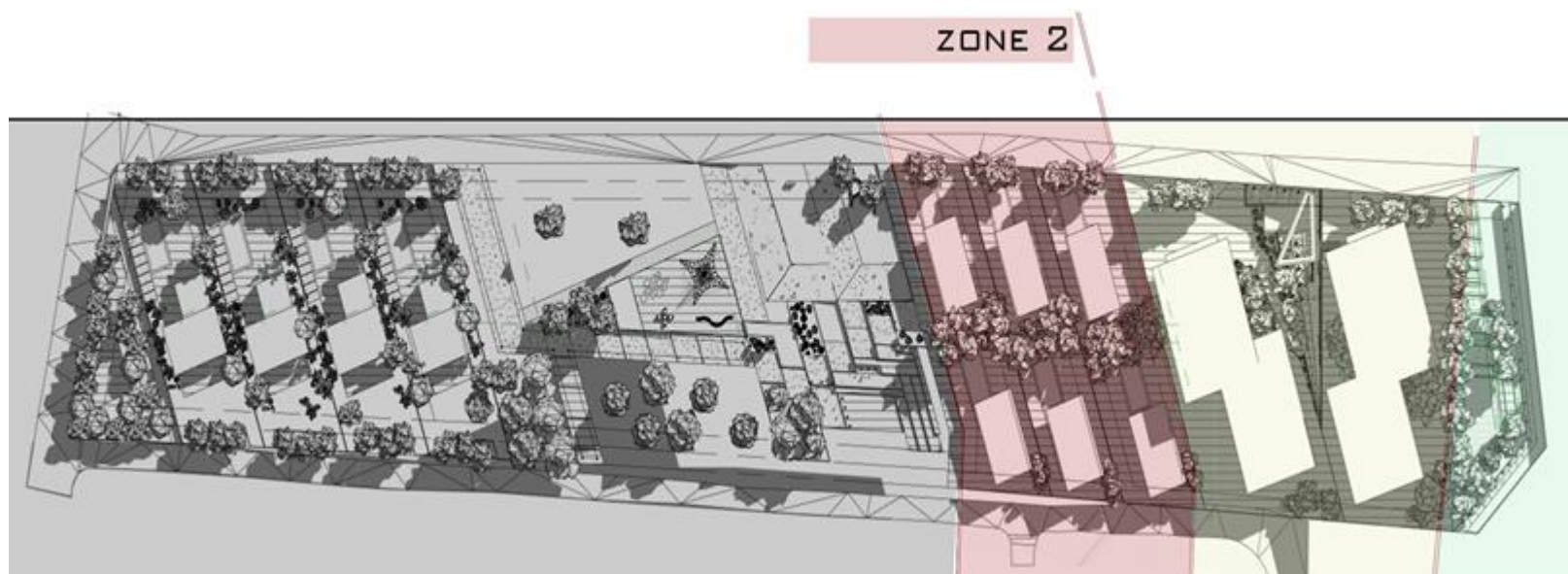
ZONE 3

ZONE 2

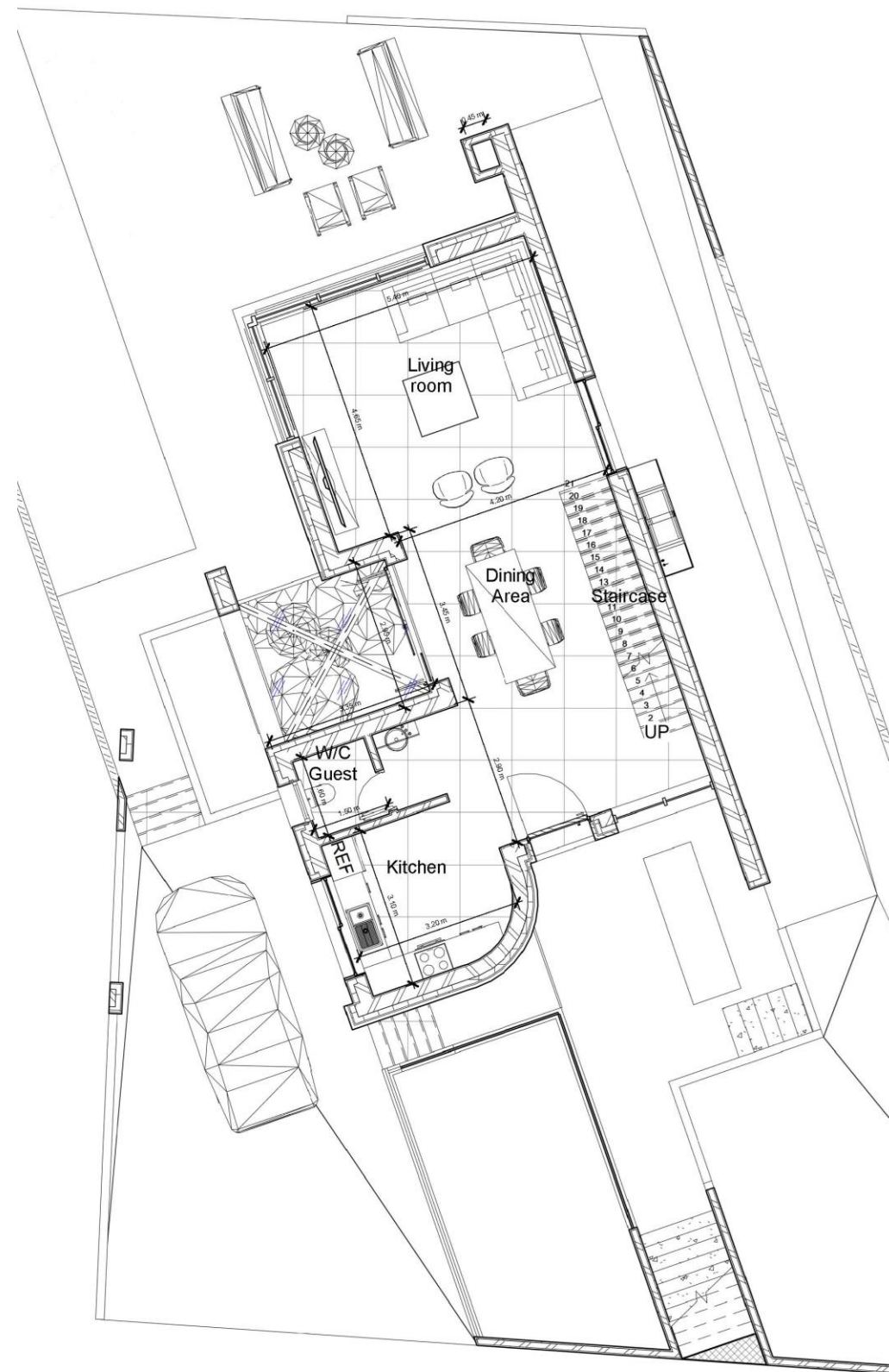
ZONE 1

JENARC

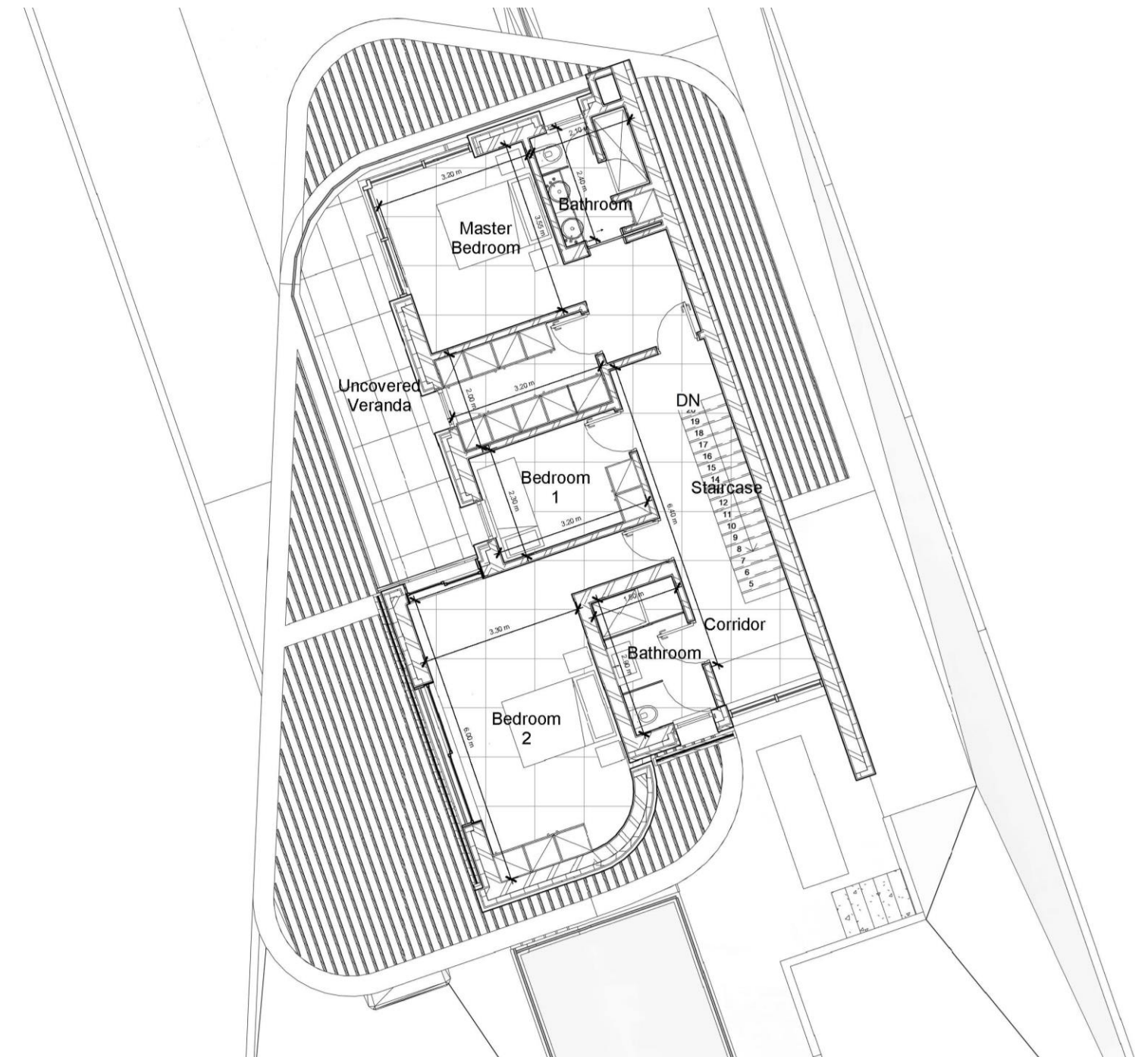






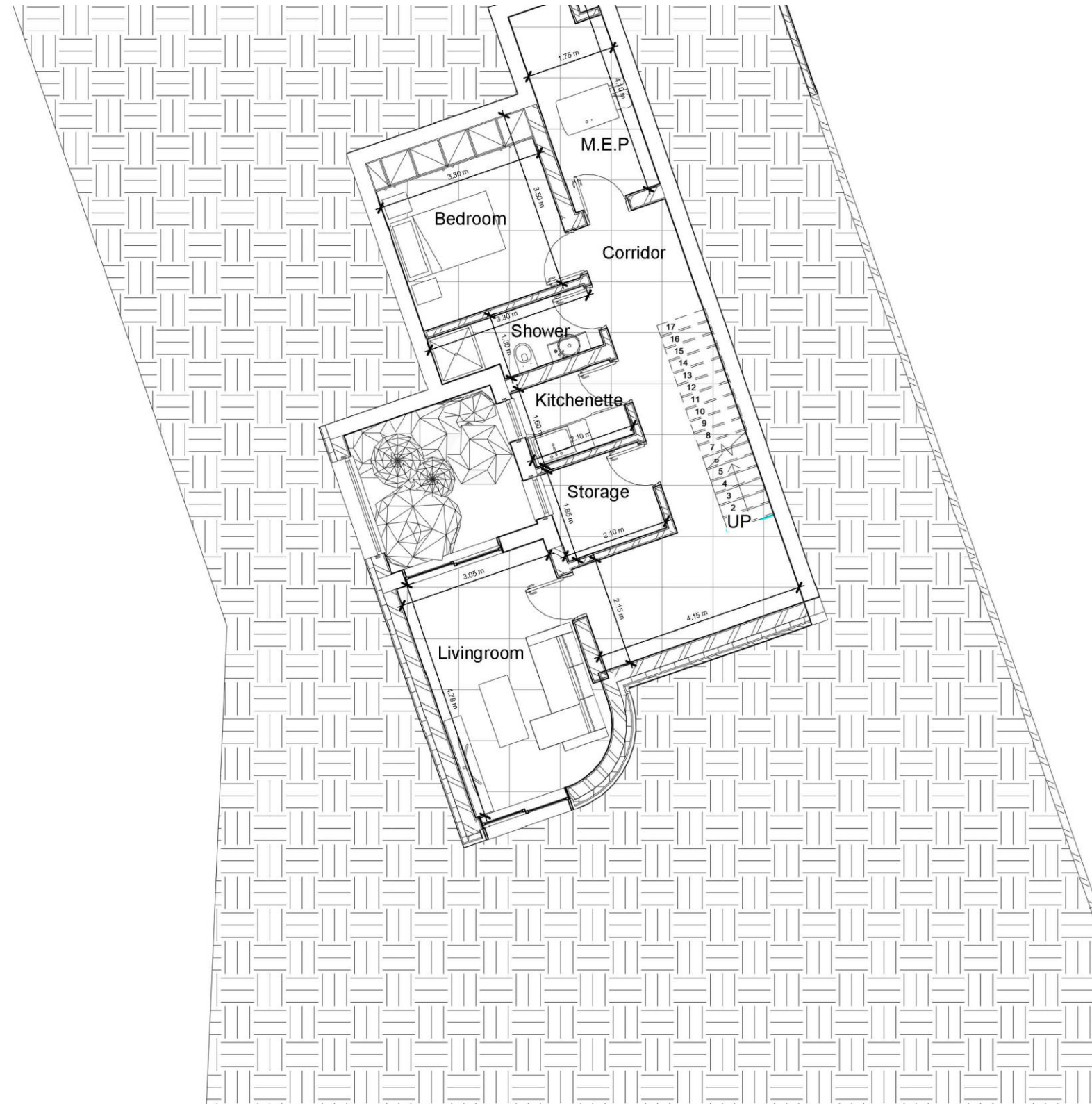


Ground Floor  
 Covered area 79sqm  
 Covered Veranda 36sqm

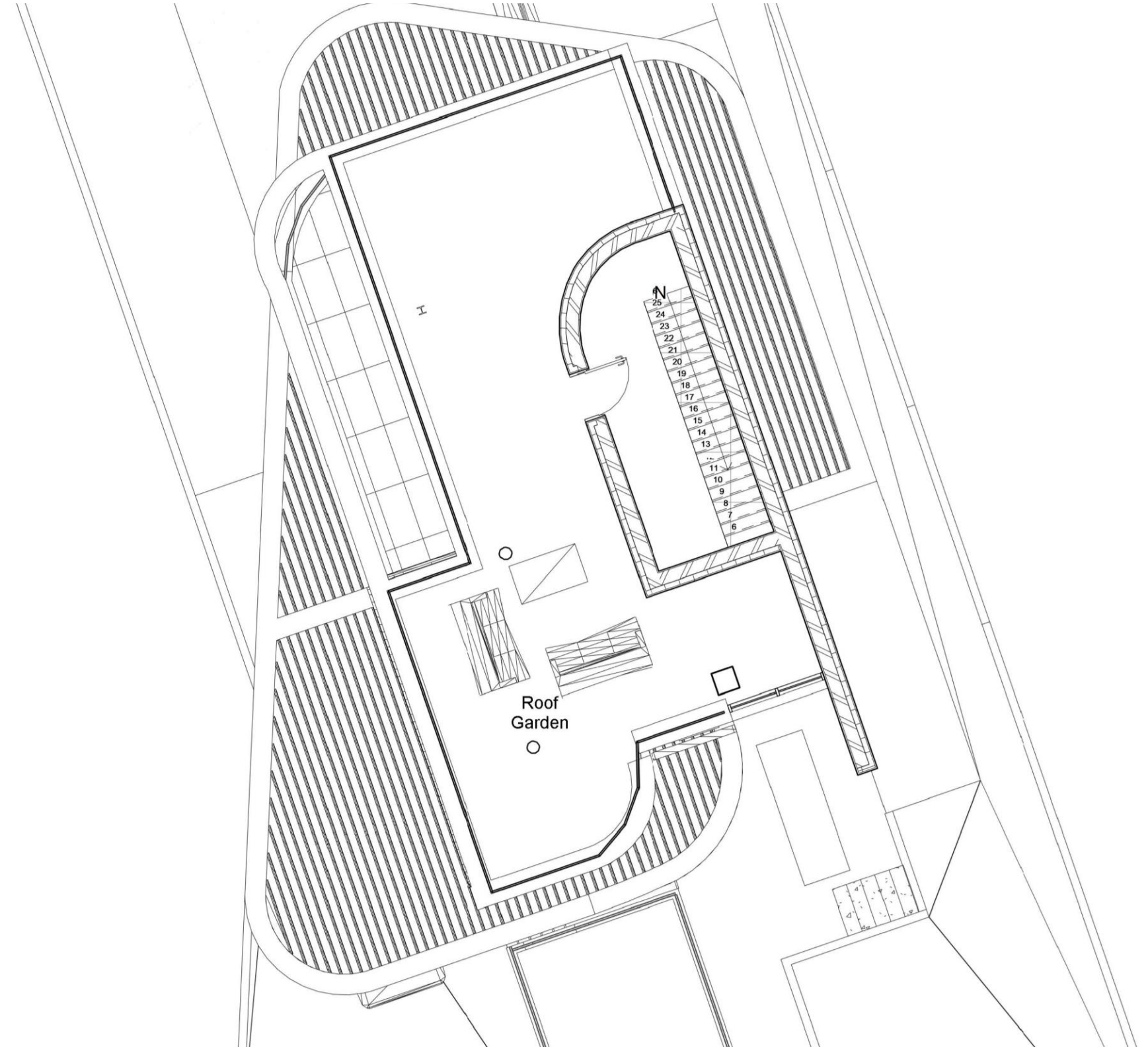


First Floor  
 Covered area 76sqm  
 Covered Veranda 15sqm





Basement  
Covered area 82sqm

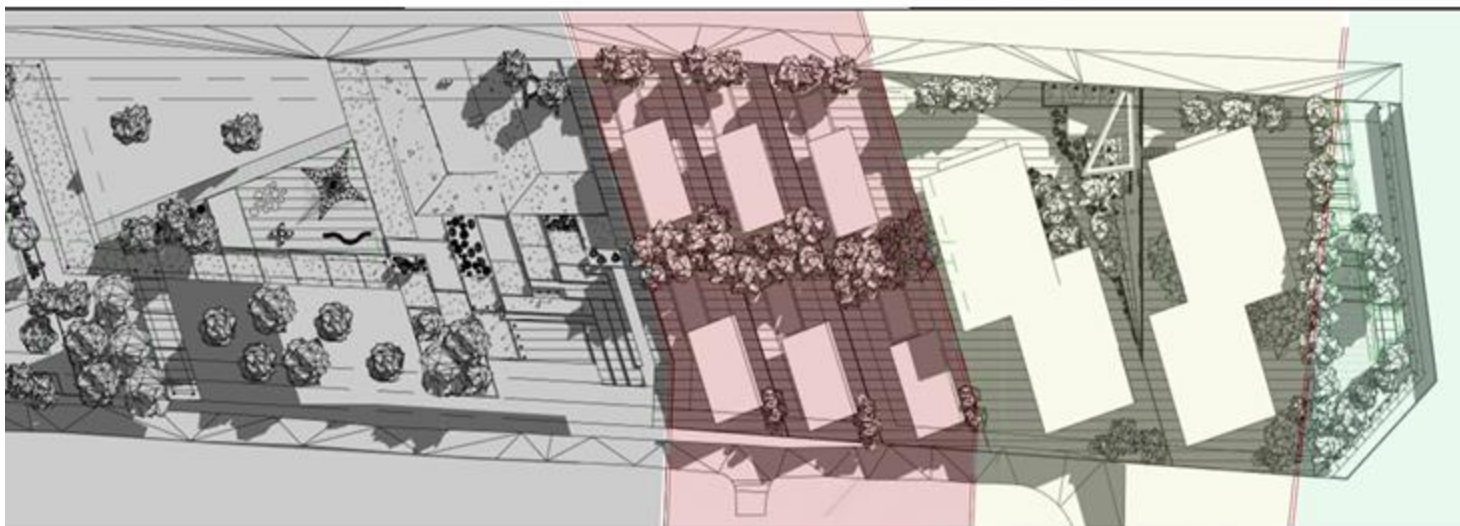


Roof Garden

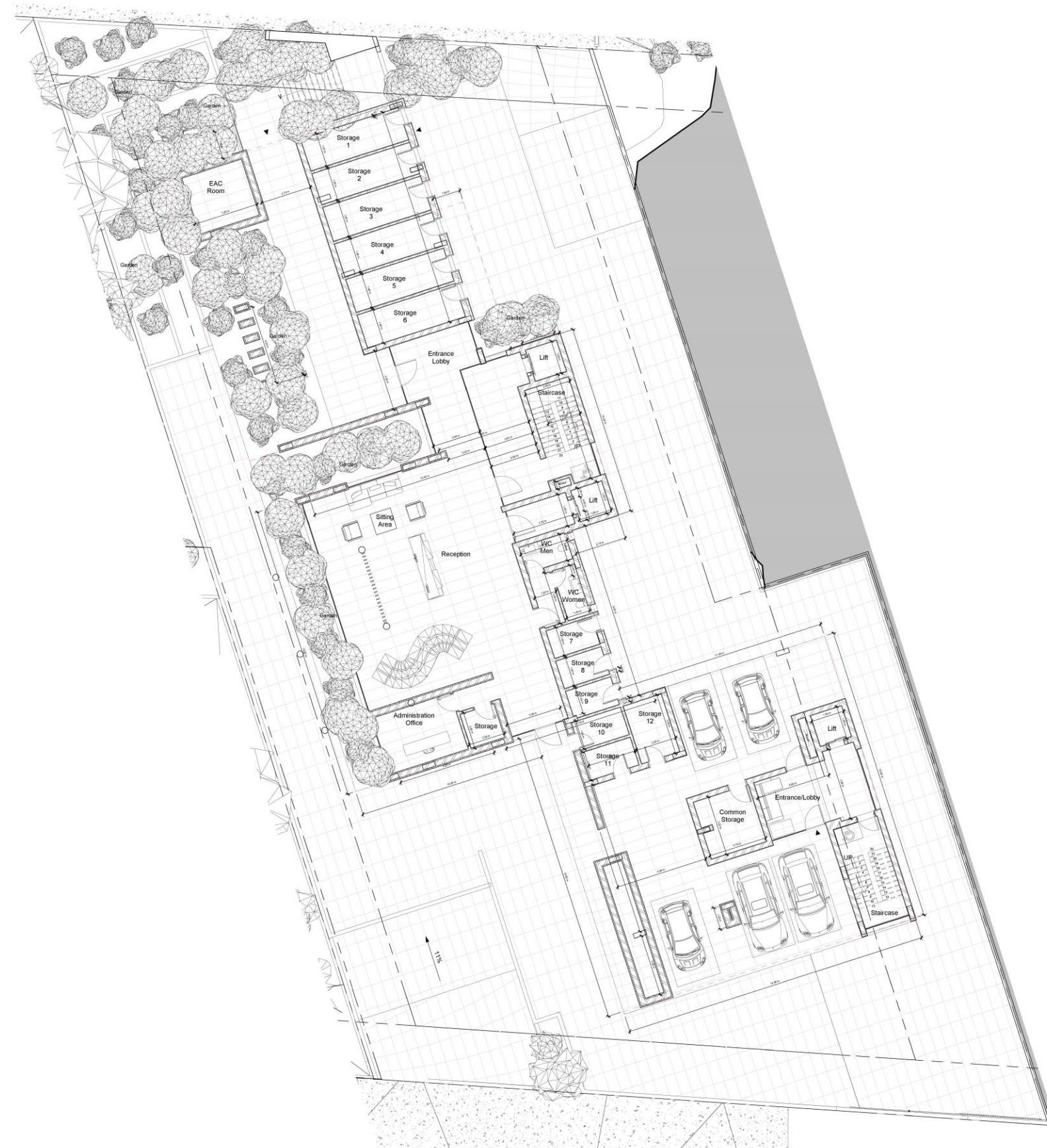




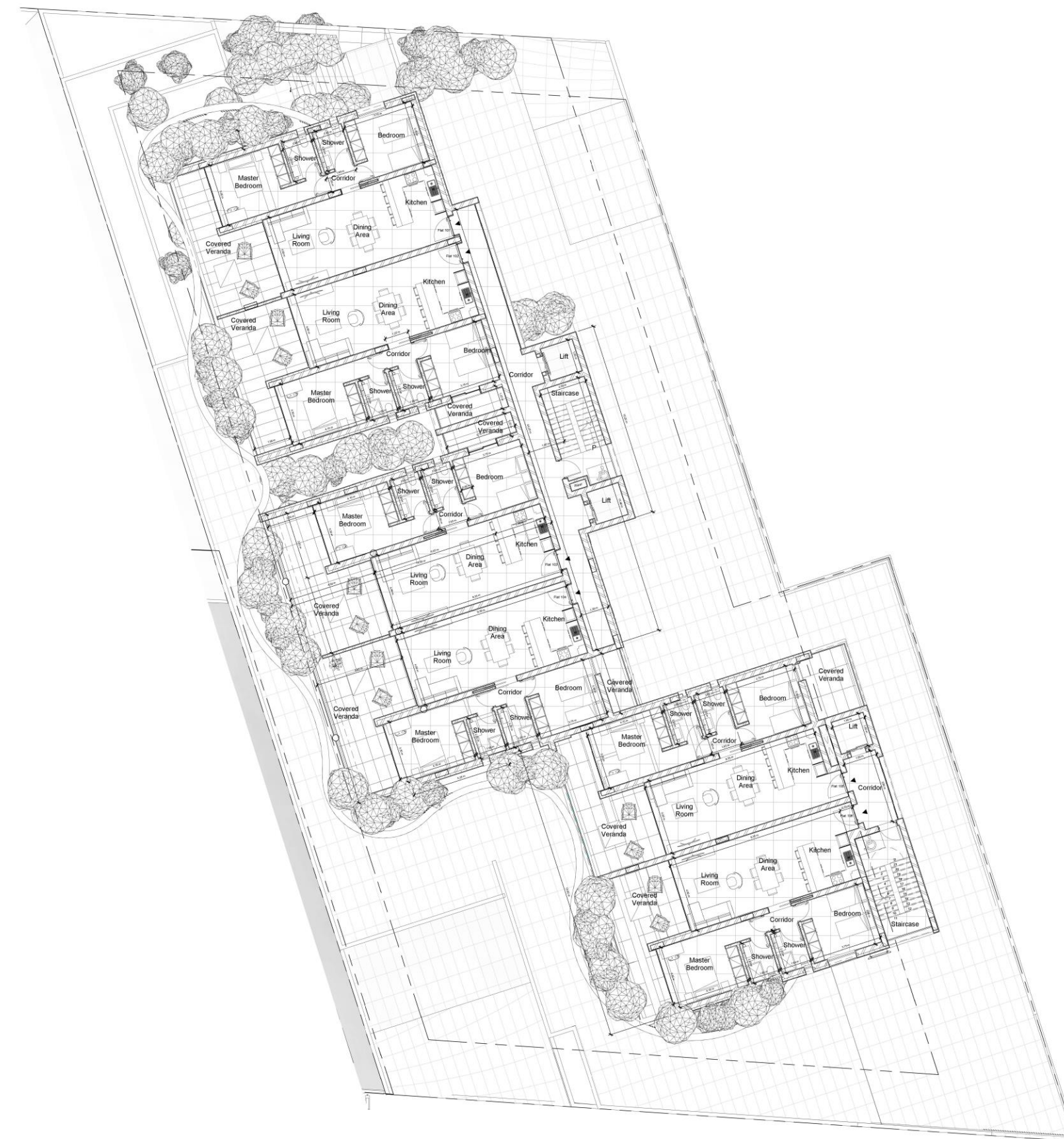
ZONE 3





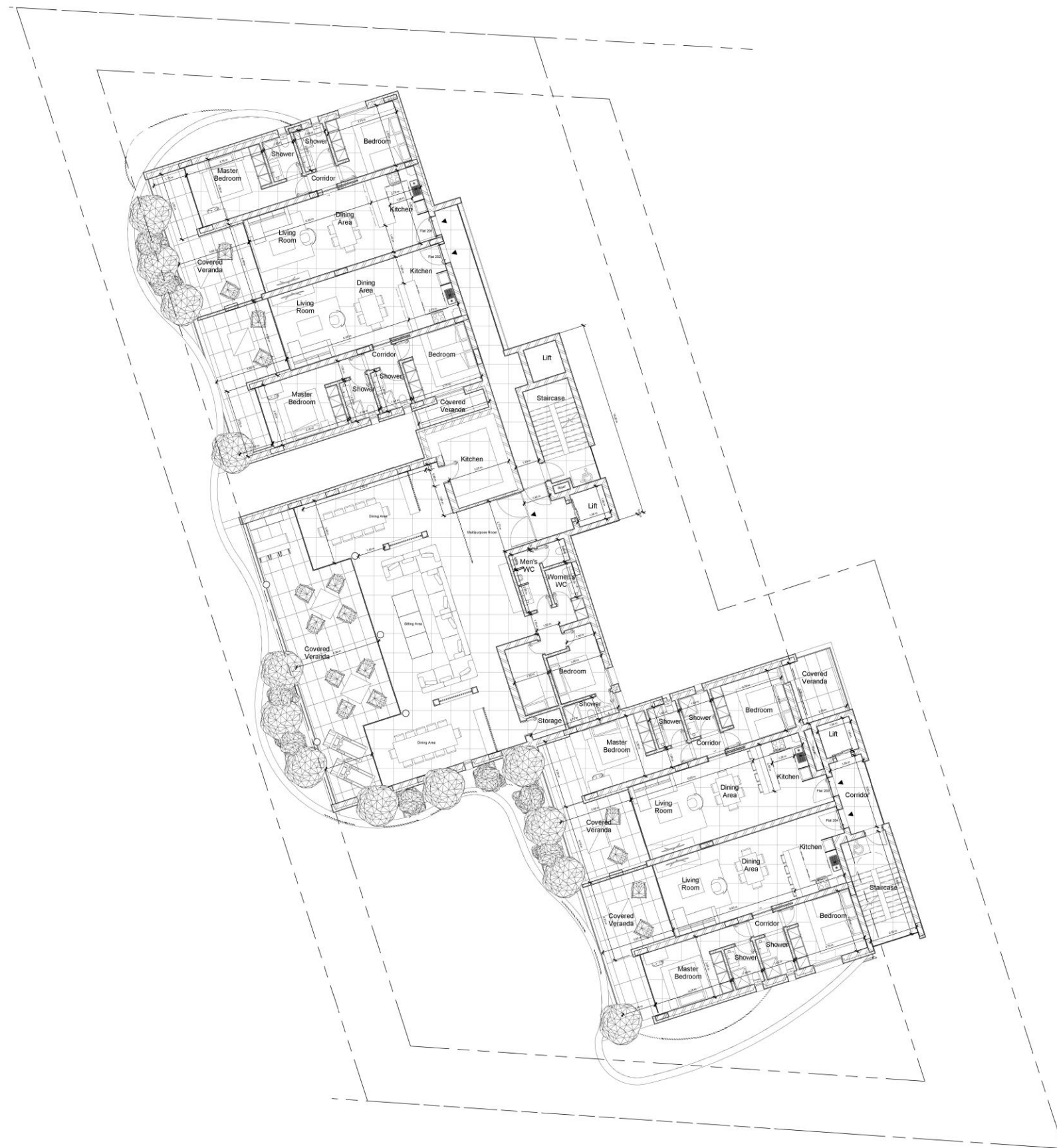


**Ground Floor**  
Lobby, Sitting area, storage rooms

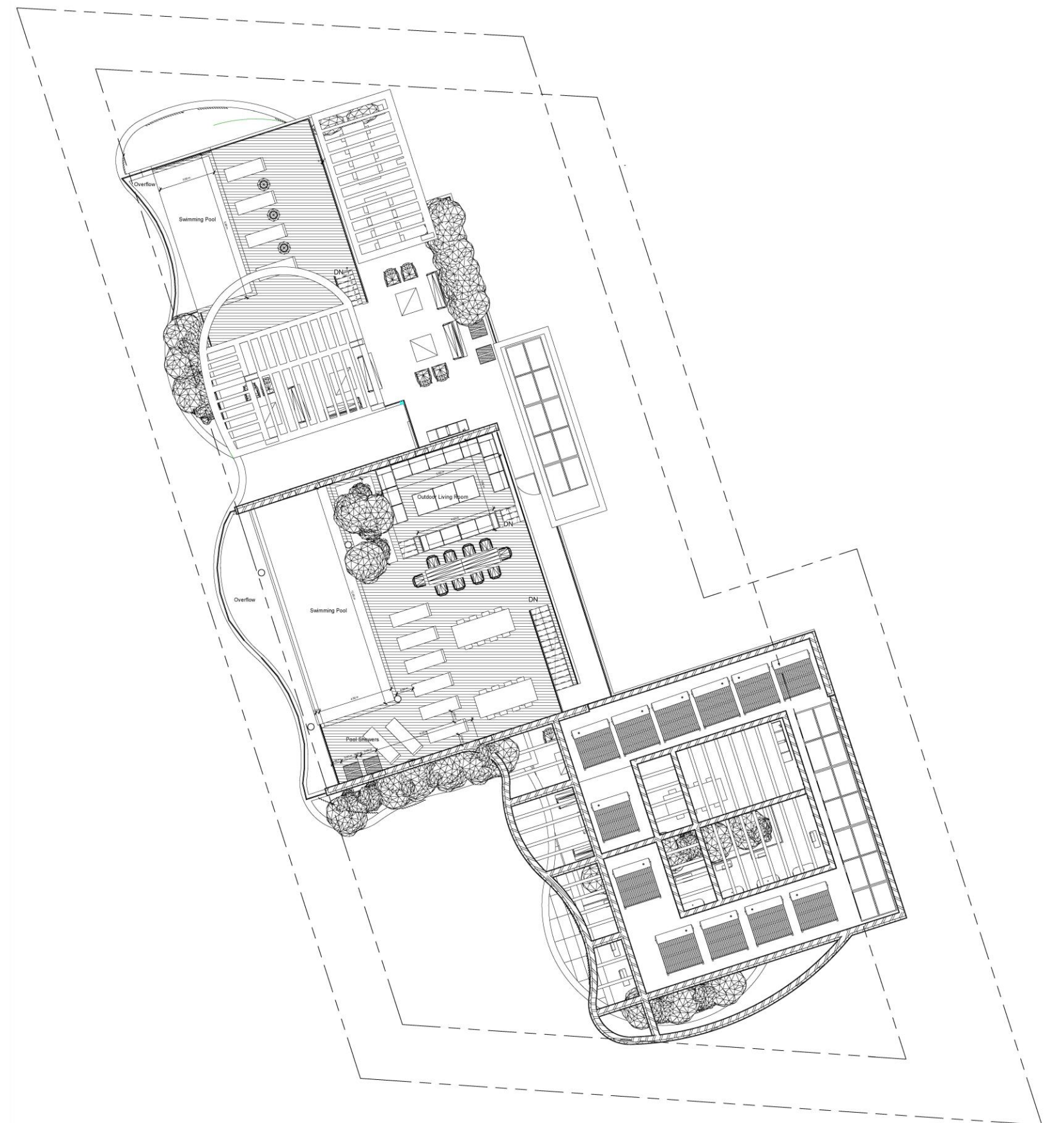


**First Floor**  
2 bedroom apartments, around  
110 sqm





2<sup>nd</sup> Floor  
2 bedroom apartments, around 110 sqm  
Plus VIP club house



Roof  
Pool, Pool Bar